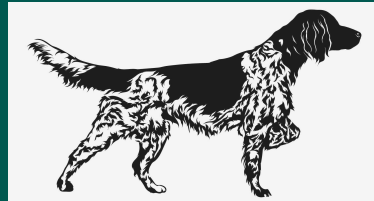




Royal Kennel Club



The Large Munsterlander Club

# Large Munsterlander 2025 survey results



# Overall findings

- 273 dogs were reported for in the survey
- In total, 508 individual conditions were reported
- The top conditions are shown in Table 1, with the most common being arthritis, infrequent ear infections and environmental allergies
- In terms of the top body systems reportedly affected, these were cancers, masses and lumps, followed by neurological, and gastrointestinal/ digestive problems
- The most common cause of death was due to a cancerous condition, with the breed having an overall median age at death of 11 years

Table 1: Top conditions reported in the survey

Condition	Count	%
Arthritis	24	8.8%
Ear infections - infrequent (e.g. one-off)	20	7.3%
Allergies (environmental e.g. grass pollen)	19	7.0%
Sensitive stomach	15	5.5%
Ear infections – frequent	14	5.1%
Allergies - unknown	13	4.8%
Anxiety	13	4.8%
Aggression towards other dogs	12	4.4%
Cryptorchidism (failure of testicles to descend)	12	4.4%
Food allergies/intolerance	11	4.0%
Lipoma (fatty lump)	11	4.0%
Separation Anxiety	11	4.0%

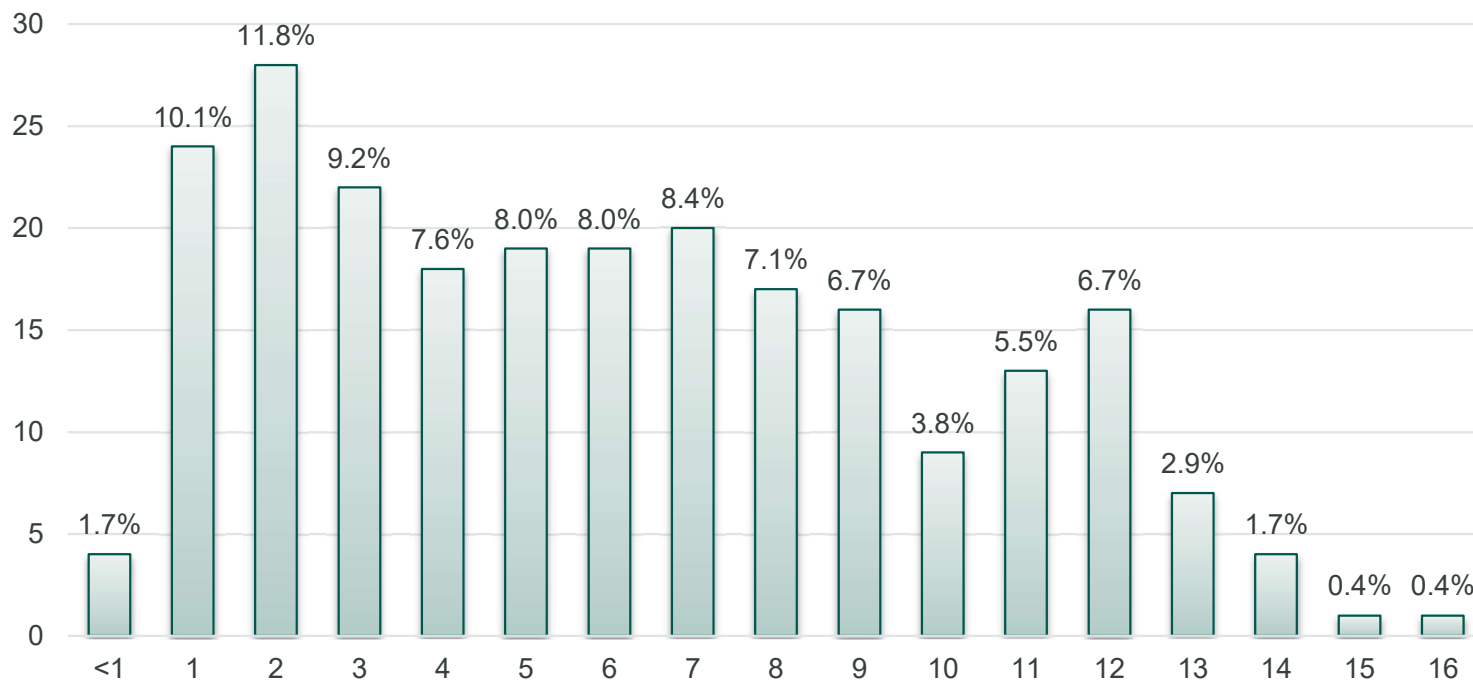
Table 2: Top affected body systems reported in the survey

Top body systems reported	Count of reported conditions within body system	%
Cancers, masses and lumps	36	19.5%
Neurological	19	10.3%
Gastrointestinal/ digestive	17	9.2%
Skin and/or coat	15	8.1%
Muscles, bones and joints	13	7.0%
Eyes	13	7.0%
Immune	11	5.9%
Behavioural	10	5.4%
Reproductive	9	4.9%
Ears	7	3.8%

# Age of live dogs

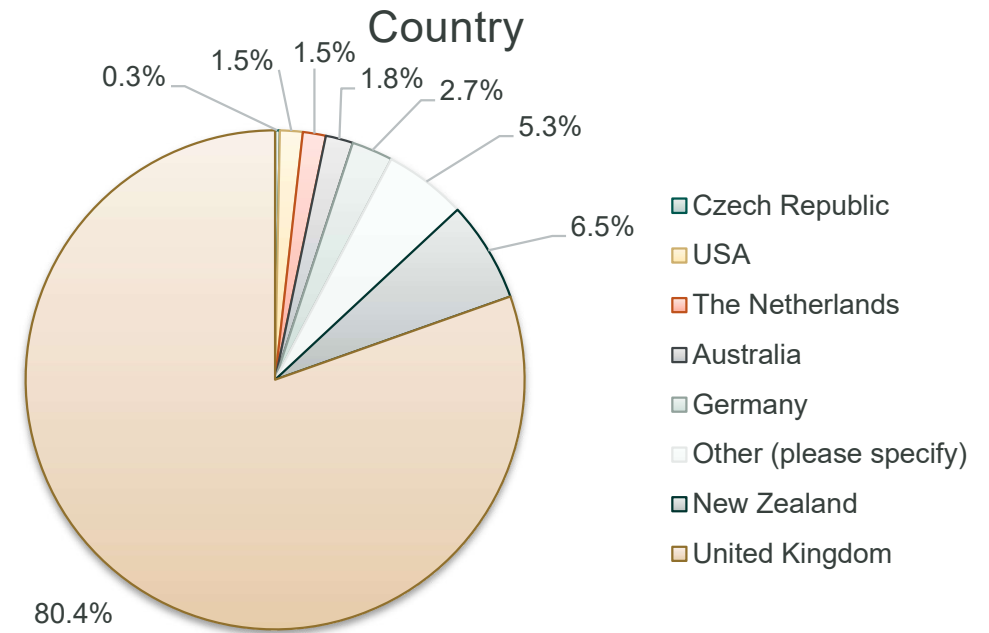
- The median age of dogs reported within the survey was 5.75, ranging from four months to 16 years and 1 month

Age of dogs reported in the survey

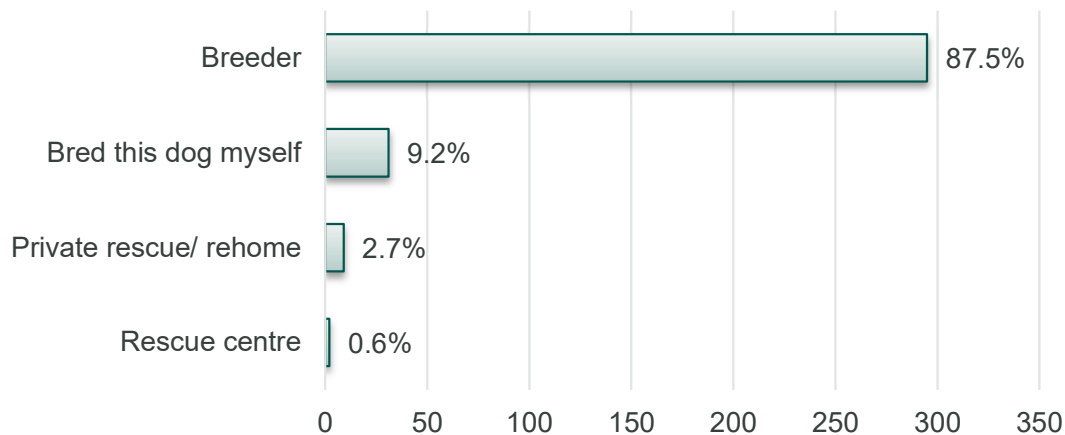


# Country and where people sourced their dog from

- The majority of dogs reported for were based in the UK, from 337 responses
- In terms of how people acquired their dog, the majority had sourced their dog from a breeder, or had bred the dog themselves

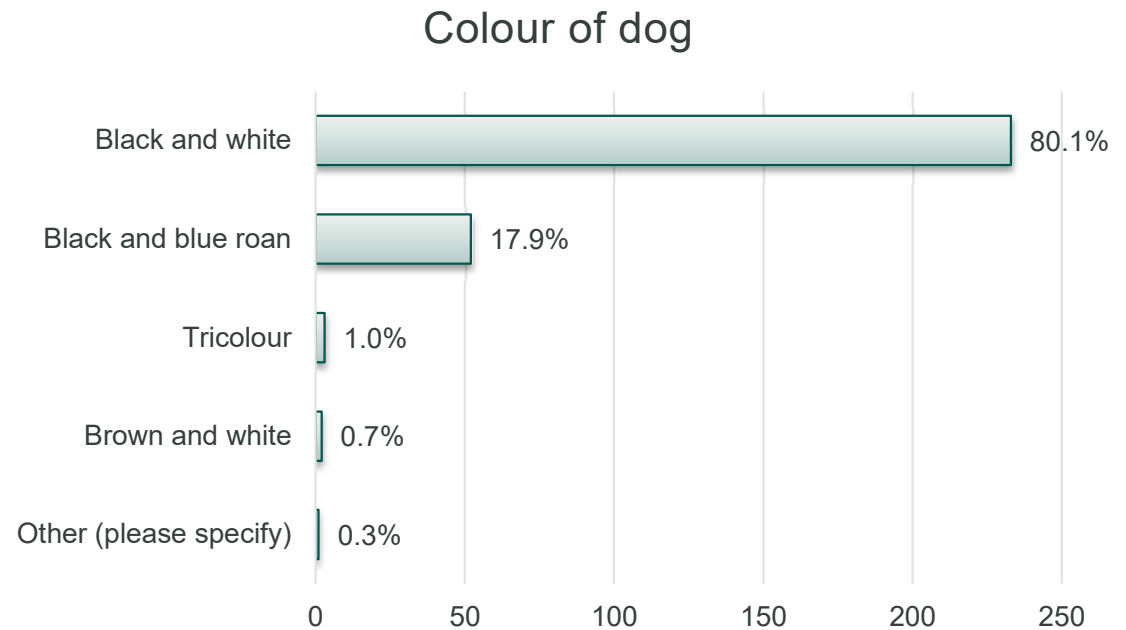


### Source of dogs



# Colour

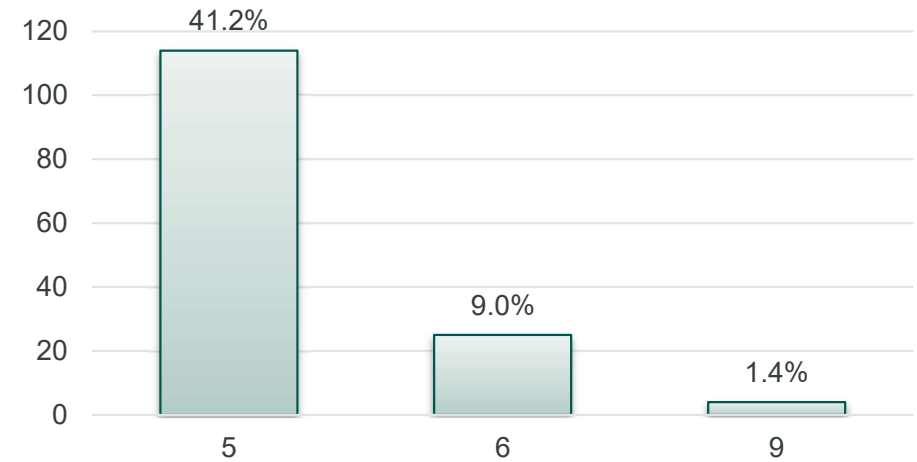
- The most common colour provided was 'black and white', out of a total of 291 responses
- The other response had no provided colour



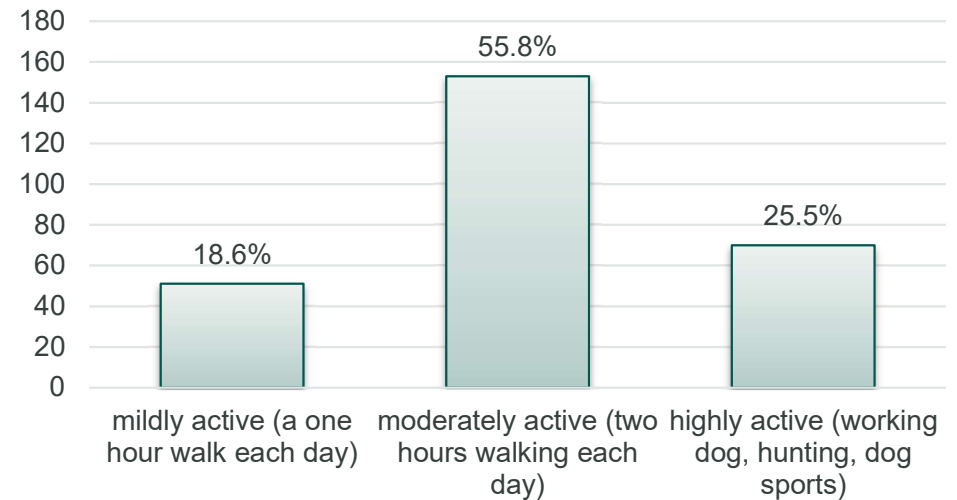
# Activity and weight

- Of 274 responses, the median weight of dogs included was 30kg, ranging from 16kg to 43kg+
- Owners were also asked to report where they felt their dog sat in terms of body condition score (BCS), with the majority feeling their dog was of optimal weight (score 4/ 5), although some overweight and obese dogs were also reported
- Of 277 responses, 91.0% felt their dog's weight stays consistent
- In terms of activity, the majority of owners (55.8%) felt their dog is moderately active
- 115 dogs were reported to take part in sports, with these including: agility, canicross, gundog training, hunting swimming and working trials

Body condition score



How active is your dog?



# Sex and neuter status

- Overall, 61.2% of dogs had been neutered
- In terms of age when neutered (where known), the median age was 2 years, ranging from less than a year old to 15 years

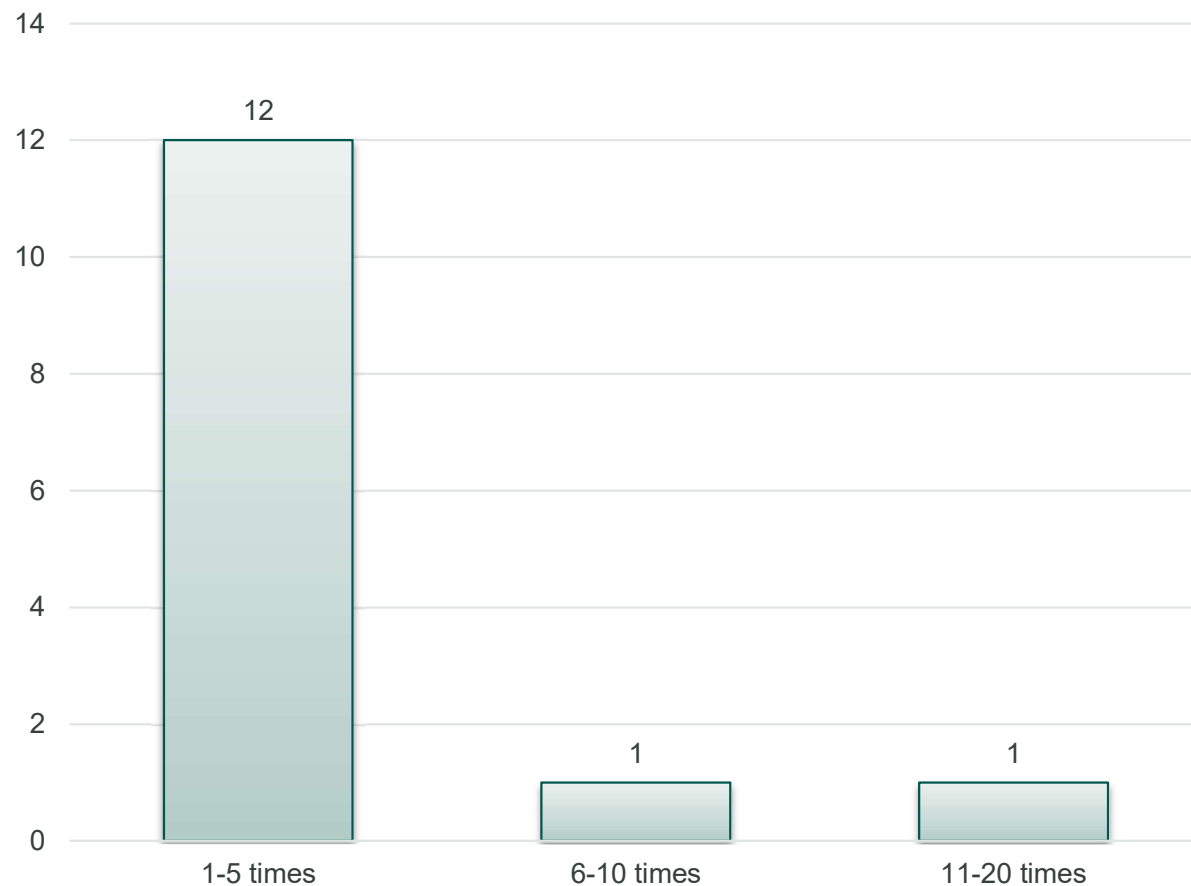
Table 3: Breakdown of sex and neuter status in the survey

Sex	Neutered Status		Total
	Entire	Neutered	
Male	61 (24.9%)	69 (28.2%)	130
Female	34 (13.9%)	81 (33.1%)	115
Total	95	150	245

# Males - breeding

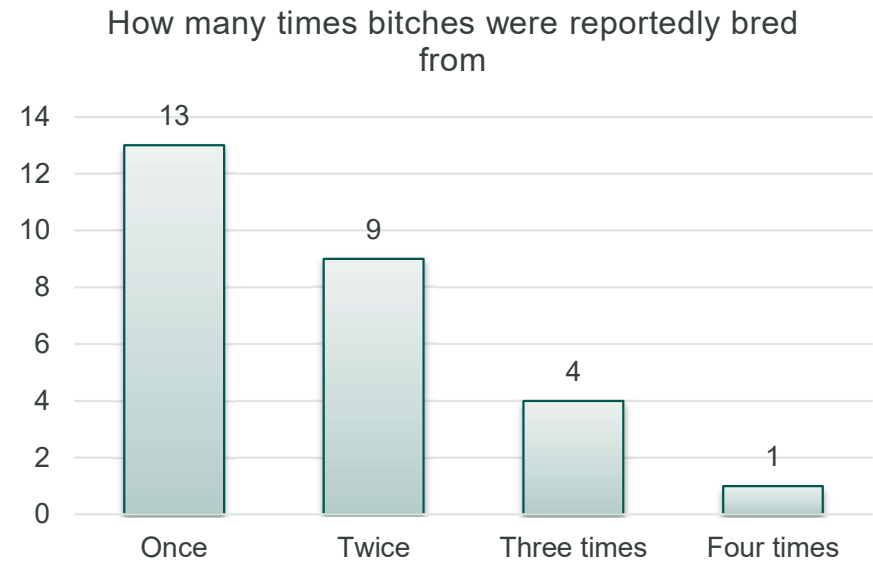
- In total 15 dogs had been bred from
- Of those reported for, the majority of sires had been used between one and five times

Count of how many times used at stud



# Females - breeding

- 28 females had been bred from
- The median age at first litter was 3 years (range 2 to 6 years)
- Most bitches had only been bred from once
- Six bitches were reported to have had a total of 7 emergency c-sections due to the following reasons:
  - Dystocia (n=2)
  - Uterine inertia (n=2)
  - Long labour/ large puppy
  - Singleton puppy



---

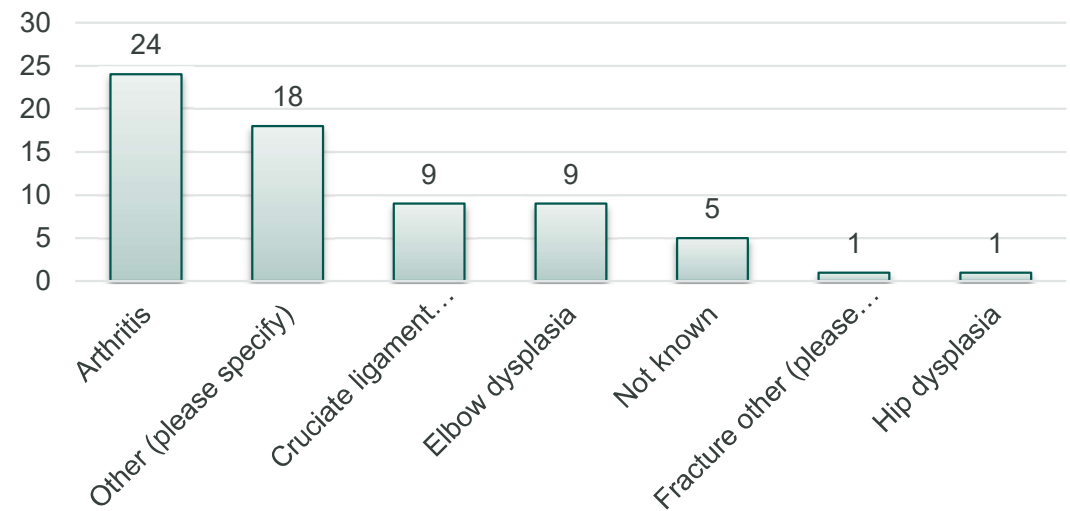
# Caveats for consideration

- The survey investigated the number of dogs affected by specific conditions within different categories. Within each of these categories, the respondents were given a choice of specific conditions, the choices of “not known” and “other” were also given. It is worth mentioning that owners may have reported the same condition more than once in different categories/ body systems which may affect the total numbers.
- Similarly, one dog might be affected by more than one condition (e.g., one dog may be affected by both food and environmental allergies) therefore the data often shows more conditions reported per category than number of affected dogs in that category.

# Muscles, bones and joints

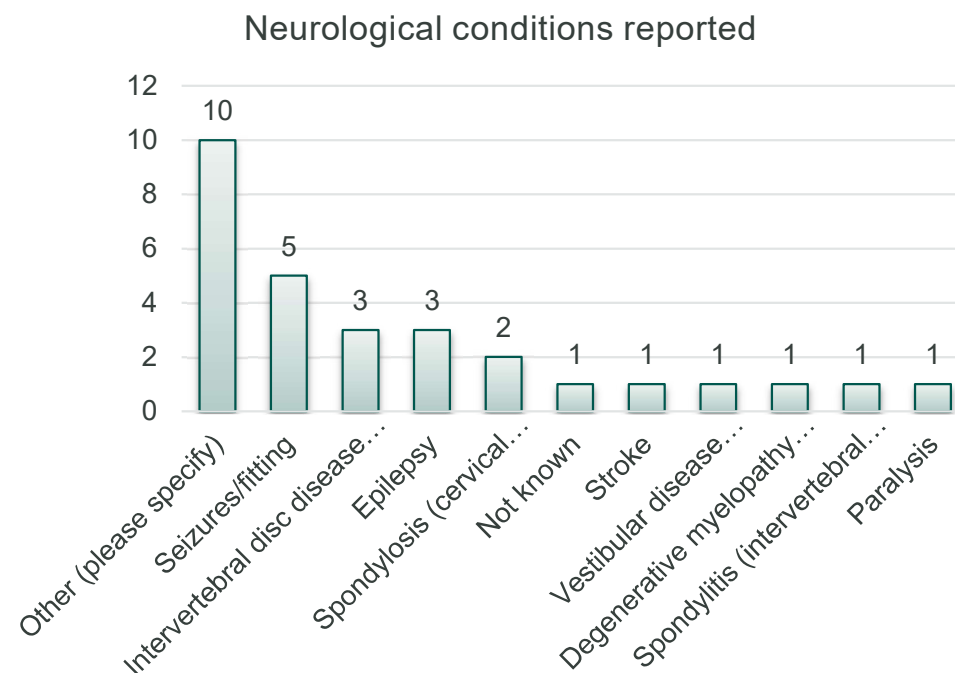
- Out of 271 responses, 60 dogs (22.1%) were reported to be affected by a condition under this category
- 55 individual conditions were reported
- The most commonly reported condition was arthritis (n=24), followed by cruciate ligament disease/ rupture (n=9), and elbow dysplasia (n=9)
- Of the 18 other reported conditions, the most common reported was injury (n=3)
- The median age at disease was 6 years (0 – 14 years)
- In terms of frequency of disorder, out of 61 responses:
  - 28 dogs were reported to have consistent disease
  - 18 a one-off occurrence
  - 15 intermittently affected
- 21 of responses felt their dog's status was due to a particular incident (e.g., accident/ injury)

Muscle, bones and joint conditions reported



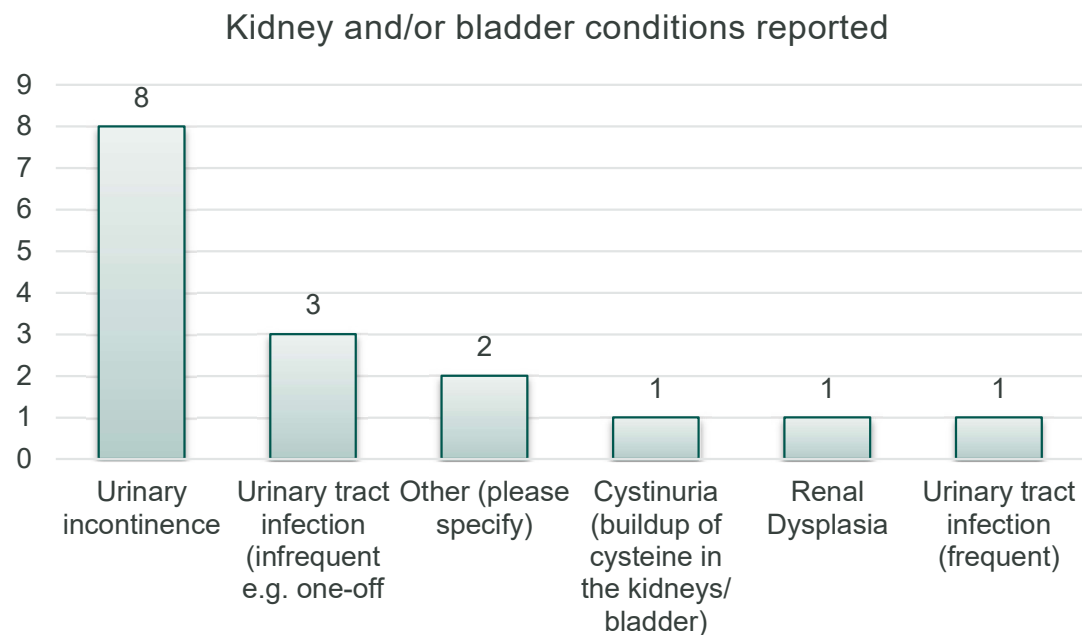
# Neurological

- Out of 267 responses, 32 dogs (12.0%) were reported to be affected by a condition under this category
- 29 individual conditions were reported
- The most commonly reported specific condition was seizures/ fitting (n=5), followed by epilepsy (n=3), and intervertebral disc disease (n=3)
- Of the 10 other reported conditions, the most commonly reported was disc disease – protrusion/ compression (n=3).
- The median age at disease was 7 years (0 – 11 years)
- In terms of frequency of disorder, out of 30 responses:
  - 13 dogs were reported to have consistent disease
  - 9 intermittently affected
  - 8 a one-off occurrence
- 17 out of 30 dogs needed ongoing management due to their disease



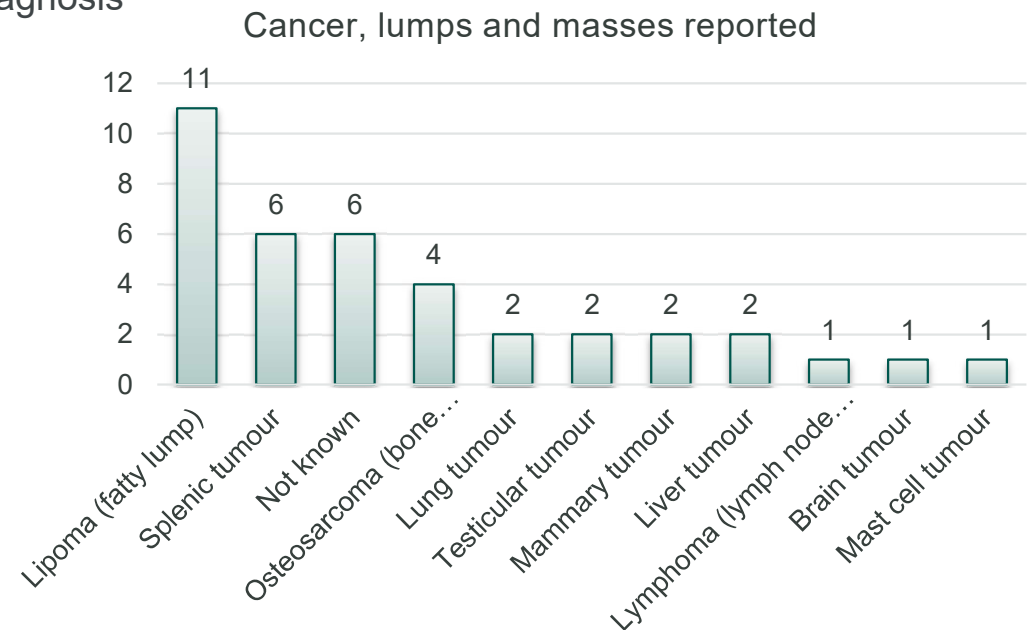
# Kidney and/or bladder

- Out of 266 responses, 11 dogs (4.1%) were reported to be affected by a condition under this category
- 16 individual conditions were reported
- The most commonly reported specific condition was urinary incontinence (n=8), followed by infrequent urinary tract infections (n=3)
- The median age at disease was 1 year (0 – 11 years)
- In terms of frequency of disorder, out of 14 responses:
  - 8 dogs were reported to have consistent disease
  - 5 intermittently affected
  - 2 a one-off occurrence
- There was a 50:50 split in terms of dogs needing ongoing management or not



# Cancers and lumps

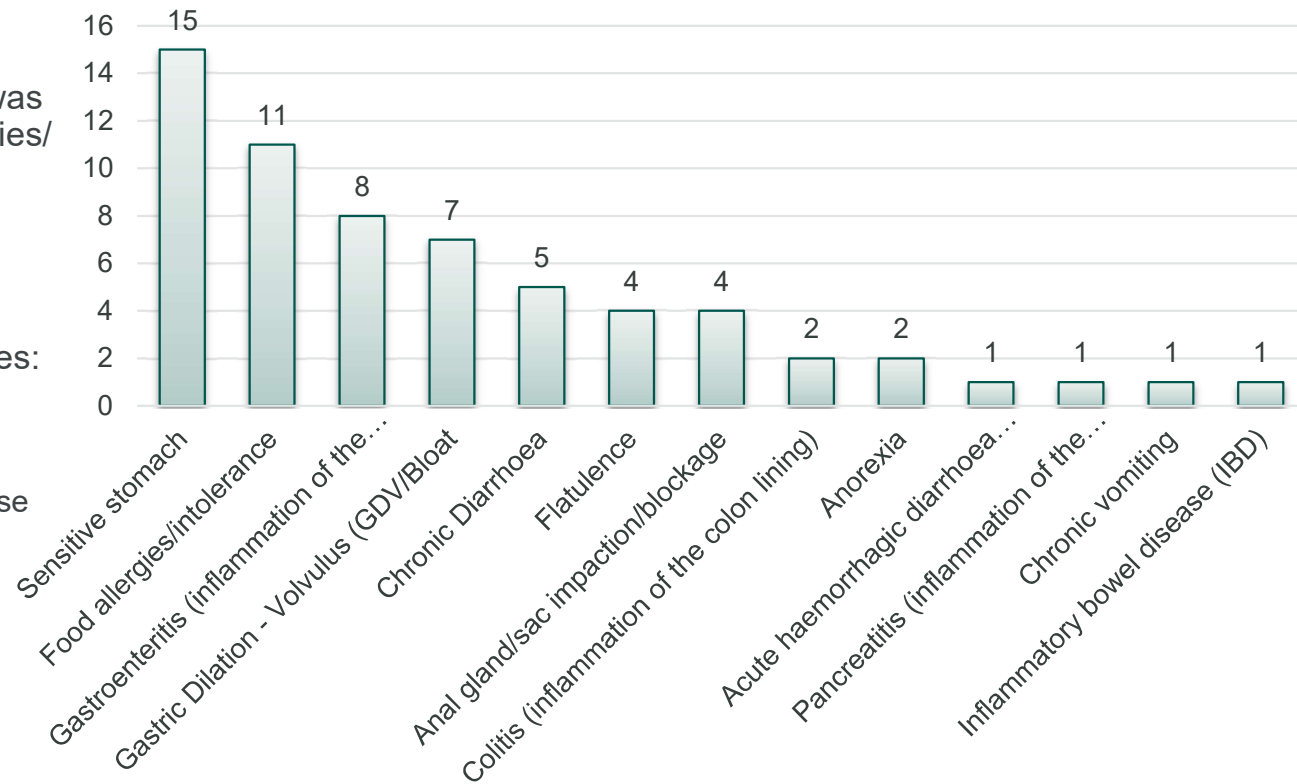
- Out of 266 responses, 43 dogs (16.2%) were reported to be affected by a condition under this category
- 38 individual conditions were reported
- The most commonly reported specific condition was lipoma/ fatty lump (n=11), followed by splenic tumour (n=6)
- 25 dogs had their disease status confirmed by laboratory diagnosis
- The median age at disease was 9 years (0 – 13 years)
- In terms of frequency of disorder, out of 42 responses:
  - 14 dogs were reported to have consistent disease
  - 28 a one-off occurrence
- 13 out of 40 dogs required ongoing treatment for disease



# Gastrointestinal/ digestive

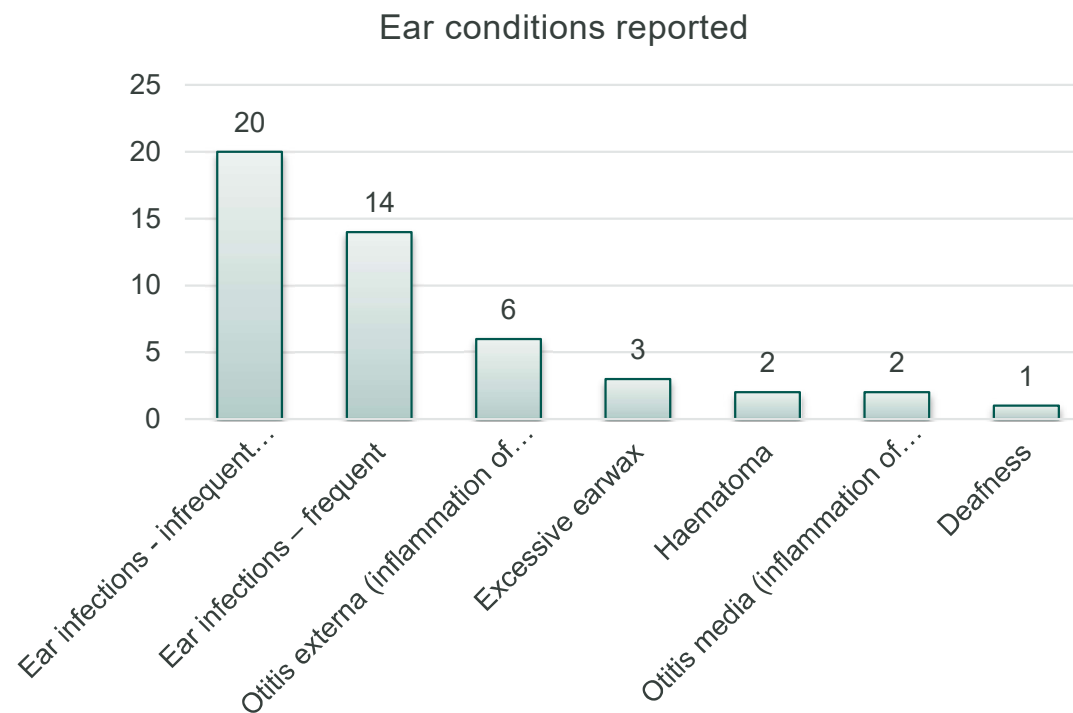
- Out of 263 responses, 42 dogs (16.0%) were reported to be affected by a condition under this category
- 62 individual conditions were reported
- The most commonly reported specific condition was sensitive stomach (n=15), followed by food allergies/intolerance (n=11), and gastroenteritis (n=8)
- The median age at disease was 3 years (0 – 12 years)
- In terms of frequency of disorder, out 55 responses:
  - 20 dogs were intermittently affected
  - 19 dogs were reported to have consistent disease
  - 16 a one-off occurrence
- 29 out of 49 dogs required ongoing treatment for disease

Digestive conditions reported



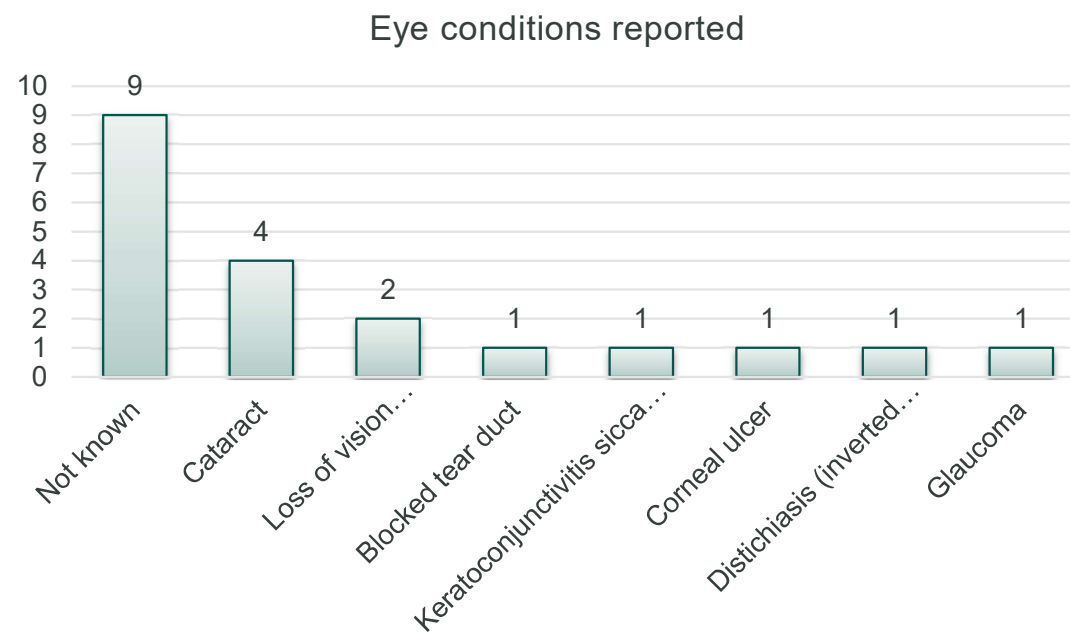
# Ear

- Out of 263 responses, 44 dogs (16.7%) were reported to be affected by a condition under this category
- 48 individual conditions were reported
- The most commonly reported specific condition was ear infections - infrequent (n=20), followed by ear infections – frequent (n=14), and otitis externa (n=6)
- The median age at disease was 3 years (0 – 11 years)
- In terms of frequency of disorder, out 46 responses:
  - 27 dogs were intermittently affected
  - 16 a one-off occurrence
  - 3 dogs were reported to have consistent disease
- 26 out of 47 dogs required ongoing treatment for disease



# Eyes

- Out of 262 responses, 25 dogs (9.5%) were reported to be affected by a condition under this category
- 20 individual conditions were reported
- The most commonly reported specific condition was cataract (n=4)
- The median age at disease was 8 years (1 – 12 years)
- In terms of frequency of disorder, out 23 responses:
  - 13 a one-off occurrence
  - 6 dogs were reported to have consistent disease
  - 4 dogs were intermittently affected
- 4 out of 21 dogs required ongoing treatment for disease



# Hearts

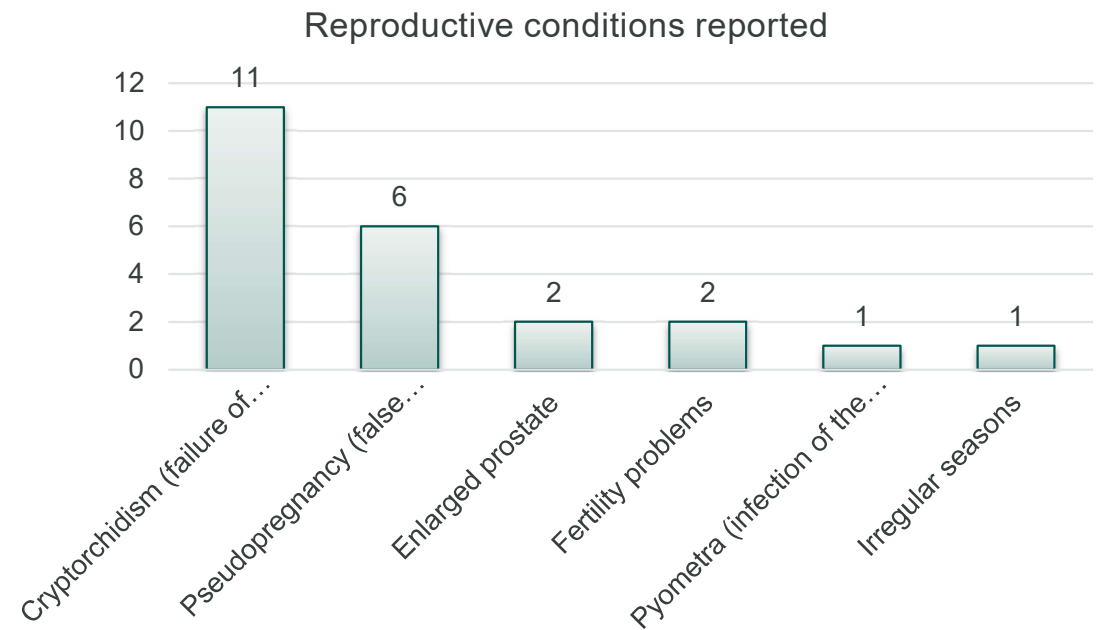
- Out of 263 responses, 5 dogs (1.9%) were reported to be affected by a condition under this category
- 4 individual conditions were reported, being heart murmur (n=2), mitral valve dysplasia (n=1), and irregular heart rate/ rhythm (n=1)
- Two other options were also provided: ventricular arrhythmias, and seizure-induced disease
- In terms of frequency of disorder, out 5 responses:
  - 3 dogs were reported to have consistent disease
  - 1 a one-off occurrence
  - 1 dog intermittently affected

# Immune

- Out of 263 responses, 9 dogs (3.4%) were reported to be affected by a condition under this category
- 8 individual conditions were reported
- Most dogs were reported to have an unknown but presumed immune-generated disease (n=3), with other conditions reported being: dermatomyositis, food allergies, immune-mediated haemolytic anaemia, lupoid onychodystrophy, and symmetrical lupoid onychodystrophy
- In terms of frequency of disorder, out 23 responses:
  - 5 dogs were reported to have consistent disease
  - 3 a one-off occurrence
  - 1 dog intermittently affected
- 8 out of 9 dogs required ongoing treatment for disease

# Reproductive

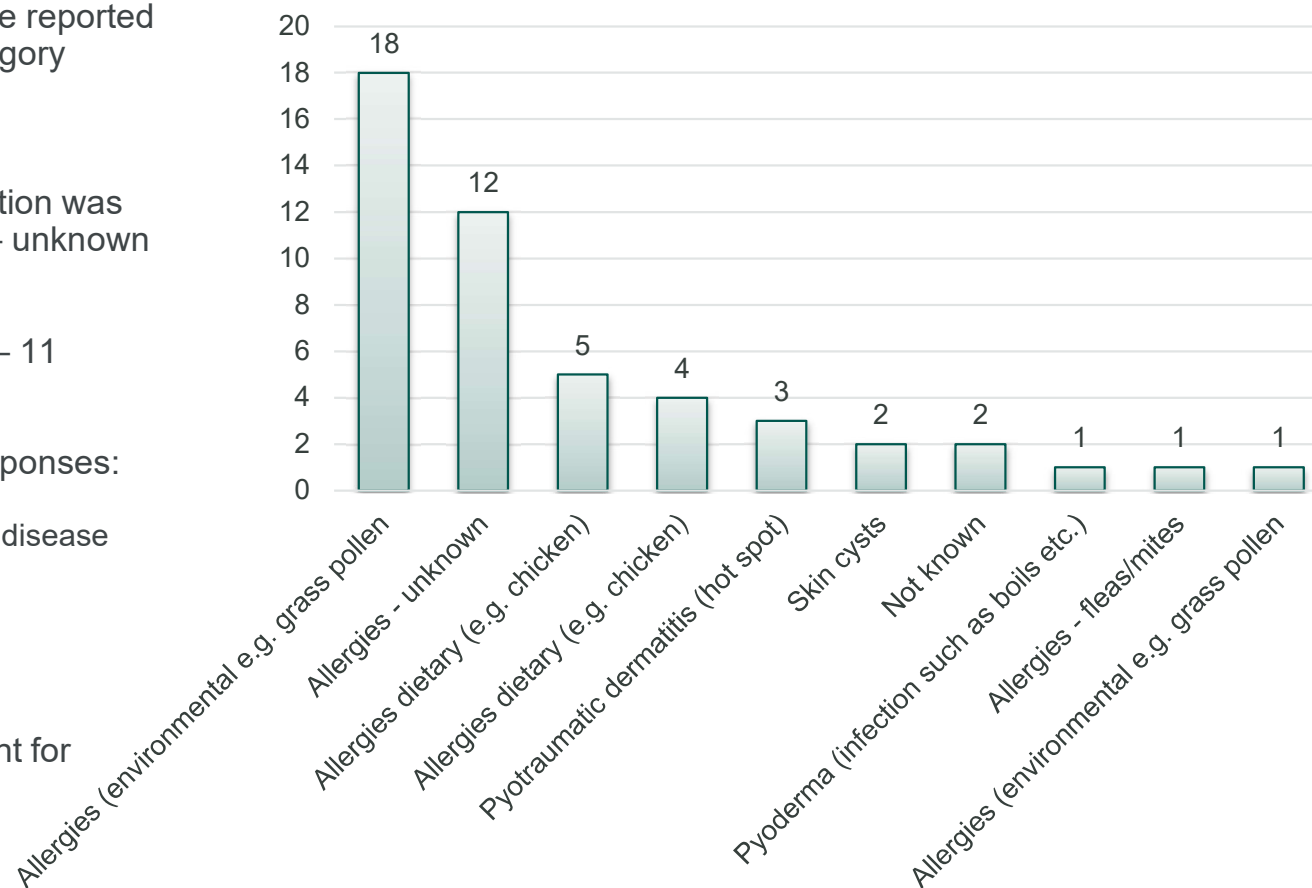
- Out of 262 responses, 24 dogs (9.2%) were reported to be affected by a condition under this category
- 23 individual conditions were reported
- The most commonly reported specific condition was cryptorchidism (n=11), followed by pseudopregnancy/false pregnancy (n=6)
- The median age at disease was 1 year (0 – 9 years)
- In terms of frequency of disorder, out 23 responses:
  - 11 a one-off occurrence
  - 7 dogs were reported to have consistent disease
  - 5 dogs were intermittently affected
- 7 out of 23 dogs required ongoing treatment for disease



# Skin and coat

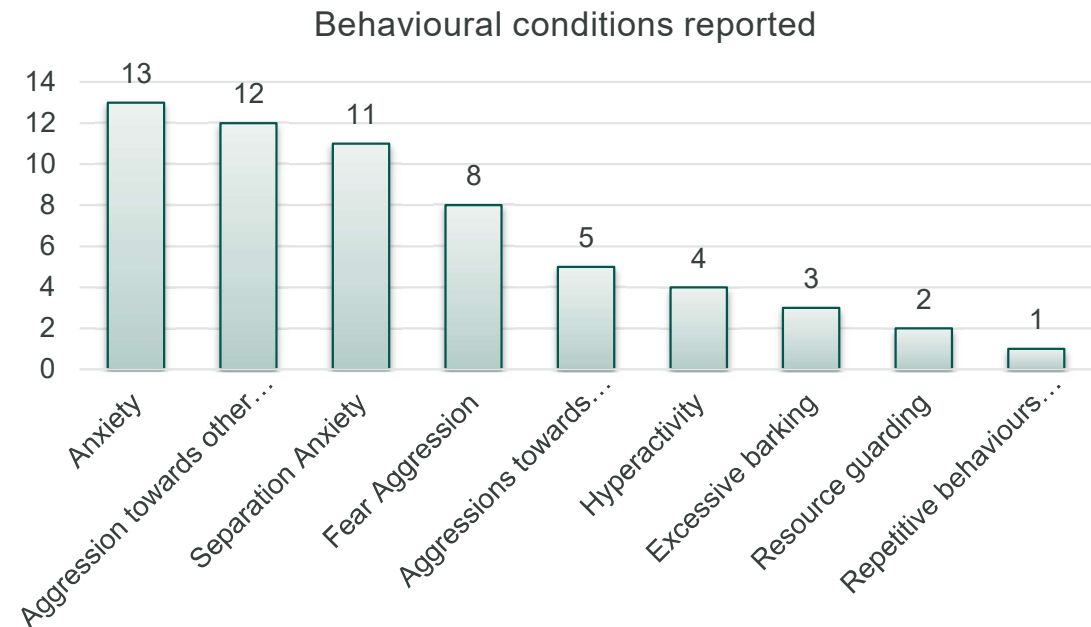
- Out of 261 responses, 42 dogs (16.1%) were reported to be affected by a condition under this category
- 49 individual conditions were reported
- The most commonly reported specific condition was allergies – environmental (n=18), allergies – unknown (n=12), allergies - dietary (n=5)
- The median age at disease was 2 years (0 – 11 years)
- In terms of frequency of disorder, out 47 responses:
  - 22 dogs were reported to have consistent disease
  - 17 dogs were intermittently affected
  - 8 a one-off occurrence
- 28 out of 39 dogs required ongoing treatment for disease

Skin and/or coat conditions reported



# Behaviour

- Out of 262 responses, 42 dogs (16.0%) were reported to be affected by a condition under this category
- 59 individual conditions were reported
- The most commonly reported specific condition was anxiety (n=13), dog aggression (n=12), and separation anxiety (n=11)
- The median age when the behaviour was first seen was 2 years (0 – 7 years)



# Other conditions

- Dental
  - 15 dogs were reported to have had a dental issue, including needing tooth extraction/ cleaning (n=3), tooth/ teeth injury (n=3), and congenital tooth/ teeth problem (e.g., born with extra teeth) (n=3)
- Haematological (blood)
  - One dog was reported to be affected by haemangiosarcoma
- Hormonal
  - Six dogs were reported to be affected, with one for each of the following: diabetes insipidus, retained testicle and heavy seasons
- Liver
  - Two dogs were reported to have been affected with liver cancer
- Respiratory
  - Two dogs were affected with a respiratory condition, although no specific condition was noted

# All conditions reported in the survey

Table 4: Full breakdown of reported conditions

Condition	Count	Condition	Count
Arthritis	24	Excessive earwax	3
Ear infections - infrequent (e.g. one-off)	20	Intervertebral disc disease (IVDD)	3
Allergies (environmental e.g. grass pollen)	19	Not known - immuno	3
Sensitive stomach	15	Pyotraumatic dermatitis (hot spot)	3
Ear infections – frequent	14	Tooth extraction/ cleaning	3
Allergies - unknown	13	Tooth/ teeth injury	3
Anxiety	13	Urinary tract infection (infrequent e.g. one-off)	3
Aggression towards other dogs	12	Anorexia	2
Cryptorchidism (failure of testicles to descend)	12	Brain tumour	2
Food allergies/intolerance	11	Coat change/ loss following neuter	2
Lipoma (fatty lump)	11	Colitis (inflammation of the colon lining)	2
Separation Anxiety	11	Fertility problems	2
Allergies dietary (e.g. chicken)	10	Gingivitis	2
Cruciate ligament disease/Cruciate ligament rupture	9	Haemangiosarcoma	2
Elbow dysplasia	9	Haematoma	2
Not known - eyes	9	Heart murmur	2
Fear Aggression	8	Iliopsoas strain	2
Gastroenteritis (inflammation of the GI tract)	8	infectious disease - tick borne	2
Urinary incontinence	8	Iris cysts	2
Gastric Dilatation - Volvulus (GDV/Bloat)	7	liver cancer	2
Seizures/fitting	7	Liver tumour	2
Injury	6	Loss of vision (partial/complete blindness)	2
Myeloma	6	Lung tumour	2
Not known - cancer/ lump	6	Mammary tumour	2
Osteosarcoma (bone tumour)	6	Not known - skin	2
Otitis externa (inflammation of the external ear canal)	6	OCD - shoulder	2
Pseudopregnancy (false pregnancy)	6	OCD - unknown	2
Splenic tumour	6	Other (please specify) - uro	2
Aggressions towards people	5	Otitis media (inflammation of the internal ear canal)	2
Anal gland/sac impaction/blockage	5	Parasitic disease - Giardia	2
Chronic Diarrhoea	5	Resource guarding	2
Not known - MSK	5	Skin cysts	2
Cataract	4	Spondylitis (intervertebral disc space infection)	2
Flatulence	4	Spondylosis (cervical osteoarthritis)	2
Hyperactivity	4	Stroke	2
Not known	4	Testicular tumour	2
Congenital tooth/teeth problem	3	Not known - respiratory	2
Disc disease/ protrusions/ compression	3	Acute haemorrhagic diarrhoea syndrome	1
Enlarged prostate	3	Allergies - fleas/mites	1
Epilepsy	3	Allergy/ bite	1
Excessive barking	3	Anal gland infection	1

# All conditions reported in the survey

Table 5: Full breakdown of reported conditions (continued)

Condition	Count	Condition	Count
Back issue - unspecified	1	Lumbosacral bone growth	1
Benign growths	1	Lump - tail	1
Biceps tenosynovitis	1	Lupoid onychodystrophy	1
Blocked tear duct	1	Lymphoma (lymph node tumour)	1
Bone cancer	1	Mast cell tumour	1
Cancer - skull	1	Mitral valve dysplasia (MVD)	1
Chronic anxiety	1	Muscle displacement	1
Chronic vomiting	1	Nasal tumour	1
Conjunctivitis	1	Non specific soft pooing	1
Corneal abrasion	1	Not known - neuro	1
Corneal ulcer	1	OCD - elbow	1
Cystinuria (buildup of cysteine in the kidneys/ bladder)	1	Old age weakness	1
Deafness	1	Ovarian	1
Degenerative myelopathy (DM - progressive spinal disorder)	1	Pancreatitis (inflammation of the pancreas)	1
Dermatomyositis (DMS)	1	Paralysis	1
Dermoid Cyst	1	Pneumonia	1
Diabetes insipidus	1	Pruritis	1
Distichiasis (inverted eyelashes)	1	Pyoderma (infection such as boils etc.)	1
Empty stomach vomiting early morning	1	Pyometra (infection of the uterus)	1
Eye infection picked up on a deserted Island	1	Renal Dysplasia	1
Eye tumour	1	Repetitive behaviours (e.g. digging, spinning, shadow chasing)	1
Fracture other (please specify if you know)	1	Retained puppy teeth/tooth	1
Gastric tumour	1	Ruptured spleen	1
Glaucoma	1	Sebaceous cyst	1
GOLPP	1	Seizure-induced disease	1
Hair loss	1	Septic arthritis	1
Heavy seasons	1	Eyelid lump	1
Hernia	1	Small skin tumour	1
Hip dysplasia	1	Spinal fusion	1
Iatrogenic	1	Spinal infection	1
Immune-mediated haemolytic anaemia (IMHA)	1	Spinal spurs	1
infectious disease - parvovirus	1	Steroid responsive meningitis arteritis (SRMA)	1
Inflammatory bowel disease (IBD)	1	Symmetrical lupoid onychodystrophy (SLO)	1
Intra ocular tumour (eye removed)	1	Testicular atrophy	1
Irregular heart rate and/or rhythm	1	Umbilical hernia	1
Irregular seasons	1	Not known - cancer/ lump	1
Jaw infection	1	Urinary tract infection (frequent)	1
Keratoconjunctivitis sicca (dry eye)	1	Ventricular arrhythmia	1
Ligament injury	1	Vestibular disease (disturbance of balance)	1
Low grade cancerous lump	1		

# Cause of death

- In total 40 dogs were reported to have sadly passed away
- The median age at death was 11 years, ranging from under 1 year to 15 years
- The most common cause of death was due to cancer

Age at death

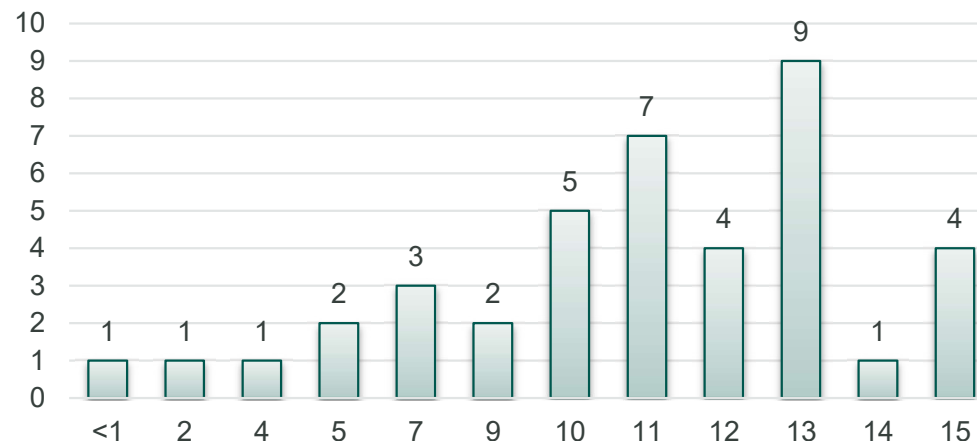


Table 6: Causes of death reported in the survey

Cause of death	Count	%
Cancerous condition	17	36.2%
Muscle, bone or joint condition	8	17.0%
Old age	7	14.9%
Neurological and/or spinal condition	3	6.4%
Breathing condition	2	4.3%
Heart condition	2	4.3%
Not known	2	4.3%
Digestive condition	1	2.1%
Immunological condition	1	2.1%
Liver condition	1	2.1%
Trauma	1	2.1%
Pain	1	2.1%
Respiratory condition	1	2.1%



**Huge thanks** to everyone who took the time to complete the survey! Any questions can be directed to your Breed Health Co-Ordinator [health@largemunsterlanderclub.co.uk](mailto:health@largemunsterlanderclub.co.uk) or the RKC [health@royalkennelclub.com](mailto:health@royalkennelclub.com)



**Royal Kennel Club**